

Service Areas of Social Studies Program, Faculty of Humanities and Social Sciences, Nakhon Pathom Rajabhat University

Jittrapon Soontorn^{1,*}

¹Department of Social Studies, Faculty of Humanities and Social Sciences, Nakhon Pathom Rajabhat University, Nakhon Pathom, Thailand

Abstract

The study of service areas of social studies program, Faculty of Humanities and Social Sciences, Nakhon Pathom Rajabhat University has 2 objectives that are 1.) to analyses the students' decision to studies in Bachelor of Education in Social Studies, (2011 Curriculum) collecting online-questionnaire through social network group of each students' section, 256 students answer the questionnaire. 2.) to analyses the service areas of Social Studies Program, collecting data by giving the represents of each section to interviewing their own friends about the school that they graduated and the location of their school, 358 students answer the questions.

The results of the study 1) Most of students making decision to study in this curriculum by internal factor as future occupation and their interesting in curriculum. During study in this curriculum most of students live in dormitory around the university and using motorcycle in everyday life.

2.) Service areas of social studies program, students who come to study in this curriculum mostly come from Nakhon Pathom, Suphan Buri, Ratchaburi and Kanchana Buri Province. And students from Amphoe Muang Nakhon Pathom are the most highly every year even though Social Studies Program have decreasing the number of new student from 152 students in 2013 to 40 students in 2016.

Keywords: Service Area, Social Study, Decision, Dormitory

1. Introduction

Social Studies Program of Nakhon Pathom has a Bachelor of Education in Social Studies curriculum which is teaching and preparing students for being a social studies teacher. Many students interesting in this curriculum. In 2011 academic year, 1st year students are nearly 300 after that the teacher council of Thailand (Khurusapha) had limitation the number of students [1] then 2015 academic year, 1st year students are only 40. Even though the quota of students to study in this curriculum has been limited but if we considered in the numbers of students who had registered to the admission test. There are 4-5 times greater than the quota of 1st year students in that academic year. One of Nakhon Pathom Rajabhat University's mission is to developing the local. Social Studies Program is the one department that producing the teachers to serving to local area around university. From this situation the researcher is trying to investigate the service area of Social Studies Program for the making an improvement and preparing the way to teaching and to analyses the students' decision to studies in Bachelor of Education in Social Studies.

2. Research objectives

- 2.1 To analyses the students' decision to study in Bachelor of Education in Social Studies
- 2.2 To analyses the service areas of Social Studies Program

3. Materials and methods

This research is focuses on the students who study in Bachelor of Education in Social Studies, (2011 Curriculum). Dividing into 2 parts, the first part is analysing students' decision to studies in Bachelor of Education in Social Studies collecting data by using online-questionnaire, 256 students answer this question. The Second part is analysing service areas Social Studies Program by collecting data about the school's location that students had been graduated, 358 students answer this question.

3.1 Materials

Populations of this study are 402 Social studies students from 7 sections who study in 5th year, 4th year, 3rd year and 2nd year in 2017 Academic year [2].

Corresponding author; e-mail: jittrapon@webmail.npru.ac.th

Preparing questionnaire for analyzing students' decision to study in Bachelor of Education in Social Studies from the related factor such as 1) Reason of decision to study in this curriculum. 2) Admission rounds to study in this curriculum 3) Hometown, Accommodation and Vehicle in everyday life.

Collecting data by using online-questionnaire, Social network group of each students' section is the tool that the researcher uses to providing the questionnaire by posting a link (URL). Then students can answer questionnaire through laptop computer, tablet or mobile phone, 256 students answer the questionnaire.

About students' high school data, the represents of each section interview their own friends about the school that they graduated and the location of their school, 358 students answer the questions.

Analyzing data, in the 1st objective about students' decision to student in this curriculum is using percentage to comparing students' reason of decision from each academic year of admission. The 2nd objective about service area of social studies program is using percentage to comparing the factor of hometown, accommodation and vehicle in students' everyday life. Using Geographic Information System (GIS) to managing spatial data, analyzing the service areas and illustrating as a map [3], [4].

3.2 Method

Decision making method, the process of people to choose to buy or receive any service in everyday life. People always making decision under their own knowledge, information and limited of the situation. Decision making method consist of 2 factors which are 1) Internal factor such as Needs, Motive, Personality, Attitude, Perception and Learning., 2) External factor such as Economy, Family, Social, Culture and Environment [5].

Central place theory developed by Walter Christaller. A theory that divide the size of market places as a hierarchy and investigate the gravity that force people to buy or receive a service from any market places. The ranks of hierarchy from the smallest to the biggest are Hamlet, Village, Town, City and Regional Capital. Each rank of place has their own range of goods as upper limit and lower limit. The upper limit related to the gravity from each factor that can motivated people from faraway place come to buy or receive a service from this place. The lower limit related to gravity from each factor that can motivated people in the area come to buy or receive a service again or making the business stay in stable situation [6].

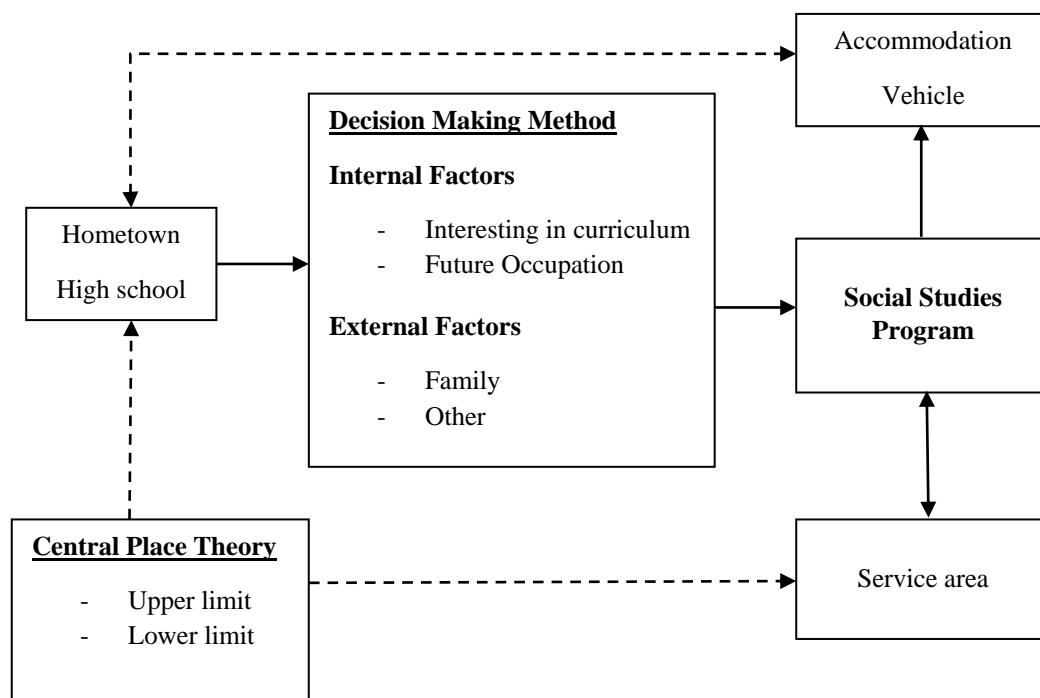


Figure 1 Conceptual framework

4. Results and discussion

4.1 The students' decision to Studies in Bachelor of Education in Social Studies from 256 students found that most of students 55.47 percentage choose to study in this curriculum because of the future occupation, Social Studies Teacher. The Second reason, 30.08 percentage are interested in the subjects that teach in this curriculum. Advice from family or other factor are not be influenced to the decision of student to study in this curriculum. If considered in each academic year, the future occupation factor is the highest reason

for students among other factors. In 2015 academic year, most of students 81.63 percentage pay attention to this factor.

Table 1 Reason of decision to study in this curriculum

Year of Admission/ Factor	Interested in curriculum		Future occupation		Advice from family		Other		Total	
	n	percentage	n	Percentage	n	percentage	n	percentage	n	percentage
2013	30	29.41	49	48.04	14	13.73	9	8.82	102	100.00
2014	32	39.51	38	46.91	3	3.70	8	9.88	81	100.00
2015	6	12.24	40	81.63	1	2.04	2	4.08	49	100.00
2016	9	37.50	15	62.50	0	0.00	0	0.00	24	100.00
Total	77	30.08	142	55.47	18	7.03	19	7.42	256	100.00

In the case of willingness to study in this curriculum, 65.63 percentage of all student are making the registration to the university by passing the first round admission examination test and 27.34 percentage of all students are making the registration to the university by passing the second round admission examination test. The third round admission examination test set up in case of substitution and only 7.03 percentage of all students passing the admission examination test in this stage. (Table 2)

Table 2 Round that pass the admission examination test

Year of Admission	1st. Examination		2nd Examination		3rd Examination		Total	
	n	percent	n	percent	n	Percent	N	percent
2013	82	80.39	15	14.71	5	4.90	102	100.00
2014	60	74.07	10	12.35	11	13.58	81	100.00
2015	14	28.57	34	69.39	1	2.04	49	100.00
2016	12	50.00	11	45.83	1	4.17	24	100.00
Total	168	65.63	70	27.34	18	7.03	256	100.00

After the investigating to student's hometown the reacher found that social studies students are from many provinces around Nakhon Pathom Province. Then not everyone can be going home every day. Only 31.25 percentage of students can go home every day and most of them are from Nakhon Pathom Province. 61 of 67 students (91.04 percentage) from Suphan Buri Province and 35 of 42 students (83.33 percentage) from Kanchanaburi Province choose to stay in dormitory because the distances are too far and the lack of public transpotation if class finished late they will not have a bus to go home (Table 3 and Figure 2).

Table 3 Accommodation type by Student's hometown

Province/Accommodation	Going Home		Dormitory		Total	
	n	percent	n	percent	N	Percent
Kanchanaburi	7	16.67	35	83.33	42	100.00
Nakhon Pathom	52	71.23	21	28.77	73	100.00
Ratchaburi	10	32.26	21	67.74	31	100.00
Suphan Buri	6	8.96	61	91.04	67	100.00
Samut Sakhon	2	22.22	7	77.78	9	100.00
Samut Songkham	1	12.50	7	87.50	8	100.00
Others	2	7.69	24	92.31	26	100.00
Total	80	31.25	176	68.75	256	100.00

In the dairy life, students have to go to university everyday if considered in the type of vehicle by student's accommodation, there are 80 students who going home every day 52.50 percentage of them go to university by public bus that not too expensive, 33.75 percentage go to university by private motorcycle and only 8.75 percentage go to university by private car. 179 students live in dormitory 56.25 percentage of them

mostly walk to university because the distances between university and dormitory are not too far about 5-10 minutes. The vehicle that students mostly use is private motorcycle (32.39 percentage) (Table 4)

4.2 The service areas of Social Studies Program between 2013-2016 academic year; students are studying in the same curriculum. Found that Students who study in this curriculum mostly come from Nakhon Pathom, Suphan Buri, Ratchaburi and Kanchana Buri Province. Most of students come from Amphoe Muang Nakhon Pathom every academic year, 68 students or 18.99 percentages. The second is Amphoe U Thong, Suphan Buri Province, 27 students or 7.54 percentages. The third is Amphoe Kam Paeng Saen, Nakhon Pathom Province, 23 students or 6.42 percentages. Consider in Table 5, Top 8 of school's location are nearby Nakhon Pathom Rajabhat University. Students from Amphoe Muang Nakhon Pathom are the most highly every year even though Social Studies Program have decreasing the number of new student from 152 students in 2013 to 40 students in 2016. (Table 5 and figure 2)

Table 4 Vehicle that uses by Student's Accommodation

Accommodations /Vehicle	Going Home		Dormitory		Total
	n	percent	n	percent	N
Walk	0	0.00	99	56.25	99
Bicycle	2	2.50	8	4.55	10
Public Motorcycle	2	2.50	7	3.98	9
Private Motorcycle	27	33.75	57	32.39	84
Public Bus	42	52.50	1	0.57	43
Private Car	7	8.75	4	2.27	11
Total	80	100.00	176	100.00	256

Table 5 The service areas of Social Studies Program

No.	Amphoe	Province	2013	2014	2015	2016	Total	Percentages of all students
1	Muang Nakhon Pathom	Nakhon Pathom	23	16	13	16	68	18.99
2	U Thong	Suphan Buri	13	9	2	3	27	7.54
3	Kam Paeng Saen	Nakhon Pathom	9	8	5	1	23	6.42
4	Muang Saphan Buri	Suphan Buri	6	10	3	1	20	5.59
5	Muang Ratchaburi	Ratchaburi	5	3	5	0	13	3.63
5	Song Phi Nong	Suphan Buri	5	3	3	2	13	3.63
6	Banpong	Ratchaburi	8	2	1	0	11	3.07
6	Nong Ya Sai	Suphan Buri	5	3	2	1	11	3.07
7	Tha Muang	Kanchanaburi	4	6	0	0	10	2.79
8	Muang Kanchanaburi	Kanchanaburi	3	3	1	2	9	2.51
8	Bang Len	Nakhon Pathom	3	4	0	2	9	2.51
8	Photharam	Ratchaburi	2	2	3	2	9	2.51
8	Doem Bang Nang Buat	Suphan Buri	2	5	1	1	9	2.51

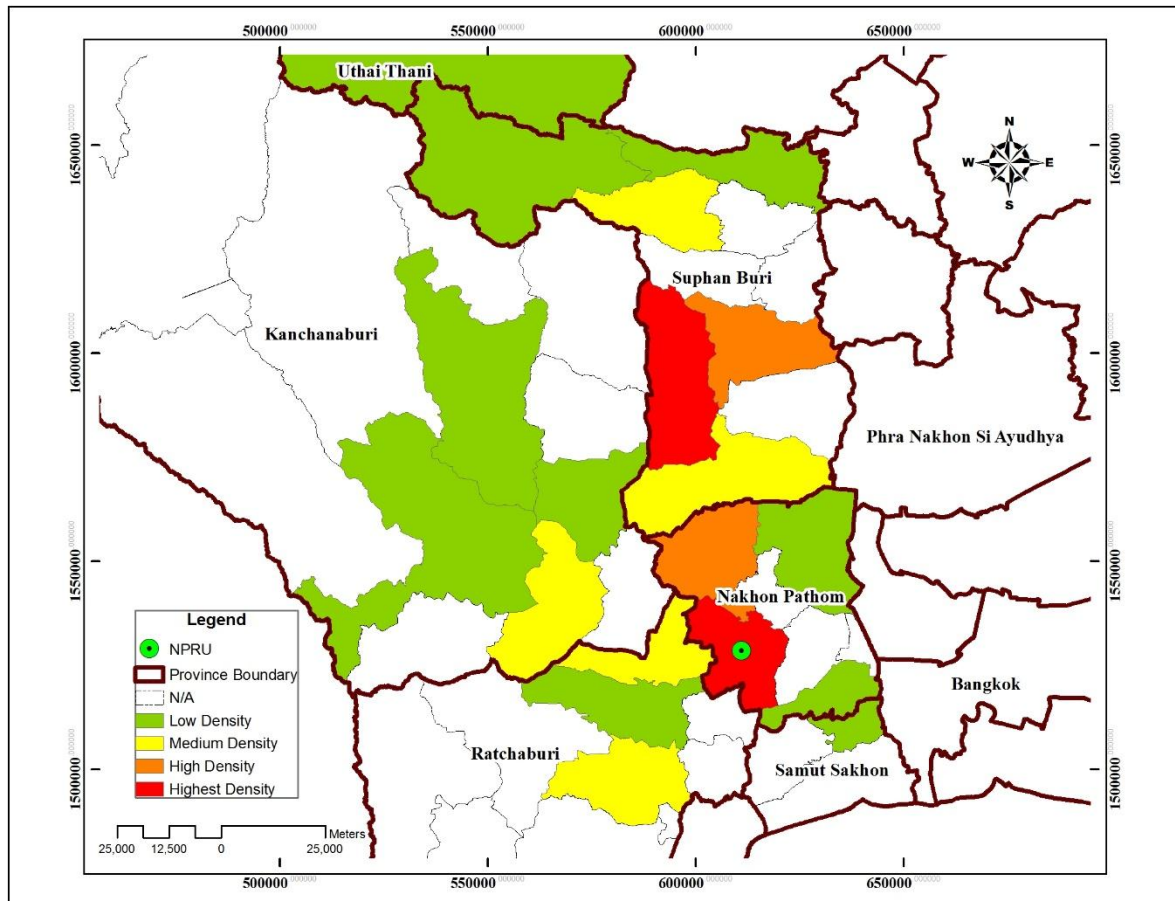


Figure 2 Service Areas of Social Studies Program

5. Conclusions

This research found that the reasons that students making decision to study in this curriculum most is internal factor as interesting in this curriculum and future occupation and external factor as advise from family and other reasons affected to students' decision less. As same as Methawee Sukpan's study "factors affecting the decision to study for high vocational certificate: A case study of Thonburi Commercial Collage" which found that internal factor as the interesting or proficiency of students is the most factor that made students making decision to study in those curriculum [7]. During study in this curriculum most of students live in dormitory around the university and using motorcycle in everyday life because of the convenient [8] then the university must be finds the way to prevents traffic accidental for their student too.

The educational institutions such as schools, high-schools, colleges and universities should locate in the urban zone for the convinence of the students [9] like Nakhon Pathom Rajabhat University. In case of service areas of social studies program consider in central place theory found that between 2013-2016 academic years mostly come from nearby provinces which are Nakhon Pathom Province, Suphan Buri Province, Ratchaburi Province and Kanchana Buri Province. By setting Nakhon Pathom Rajabhat University as the node of central place, the upper limit of good can making the distance faraway to Uthai Thani Province and Kanchana Buri Province but the density of students from those areas is low, in the future students may making decision to study in another university. The lower limit of good from this study found that Nakhon Pathom Province and Suphan Buri Province are the province that have the highest density, every academic year students from these provinces always come to study in this curriculum.

References

- [1] Piyawan P. **Rajabhat accepted teacher's bachelors limitation [Internet]**. Daily News; 25 July 2013 [cited 30 September 2017]. Available from: <http://www.moe.go.th/moe/th/news/detail.php?NewsID=33446&Key=hotnews>
- [2] The office of academic promotion and registration. **Number of Students**. Nakhon Pathom Rajabhat University; 2017
- [3] Drew G. **What is a Cartogram? [Internet]**. Population Connection; 29 August 2014 [cited 30 September 2017]. Available from: <https://www.populationeducation.org/content/what-cartogram>
- [4] Sandra D, Ernst S. **Thematic Cartography. [Internet]**. GIIT; 29 March 2017 [cited 30 September 2017]. Available from: http://www.gitta.info/ThematicCart/en/html/Typogr_Design_learning_Object5.html
- [5] Tharinee P. **Factors Affecting Overseas Students' Decisions on Advanced Study in the International Undergraduate Program, in Bangkok Metropolitan Region: [Thesis]**. Rajamangala University of Technology Thanyaburi; 2011.
- [6] Valapha P. **Application of Central Place Theory to the Analysis of Secondary School Service Areas in Changwat Nakhon Ratchasima: [Thesis]**. Chiang Mai University; 1999.
- [7] Methawee S. **Factors Affecting the Decision to Study for High Vocational Certificate: A Case Study of Thonburi Commercial Collage: [Thesis]**. Dhurakij Pundit University; 2013.
- [8] Chadchawan V. **Factors Influencing the Decision to Stay Living in the Residence of the Consumers in Amphoe Mueang Nakhon Pathom Province: [Independent Study]**. Silpakorn University; 2010.
- [9] Policy and Planning Division, Department of City Planning, Bangkok. **Report: Distribution of School in Bangkok 2011 Academic Year; 2012.**